

Rivestimenti

textiles and leathers

revêtements

Bezüge

tejidos

- Colori, tessuti e pelli fotografati sono indicativi
- Colours, fabrics and leathers photographed are indicative

A

Categoria Category

PLANET
Resistenza alla fiamma - Fire resistance
Certificato Classe 1 UNI 9175 CL 1 IM
87,5% P.V.C. plastificato - 12,5% cotone
(Martindale)



A 31 F



A 32 F



A 39 F



A 35 F



A 34 F



A 38 F



A 36 F



A 33 F



A 27 F

C

Categoria Category

Pelle sintetica traspirante
Transpirant synthetic leather
Similcuir transpirant
Luftdurchlässiges Kunstleder
Piel sintética transpirante
(Martindale 40.000)

64% Cotone - 36% Poliuretano
64% Cotton - 36% Polyurethane
64% Coton - 36% Polyurethan
64% Baumwolle - 36% Polyurethan
64% Algodon - 36% Poliuretano



C 370



C 372



C 375



C 371



C 373



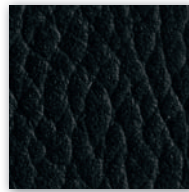
C 376



C 379



C 378



C 374

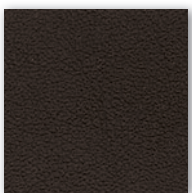
D

Categoria Category

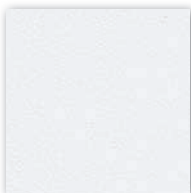
Tattamento antimicrobico
Antimicrobial treatment
Resistenza alla fiamma - Fire resistance
UNI 9175/87 CL 1M - EN 1021 - BS 5852ü

63% Poliuretano - 37% Cotone
63% Polyurethane - 37% Cotton
(Martindale 150.000)

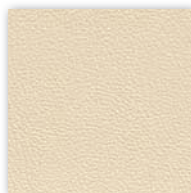

EXTREMA/AU
Ultra-Fresh^{1*}



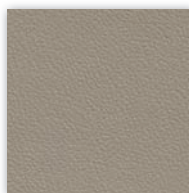
D 428



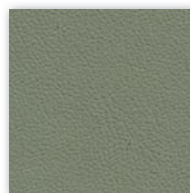
D 427



D 420



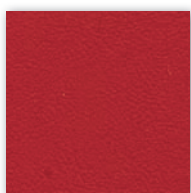
D 425



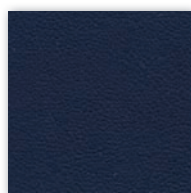
D 426



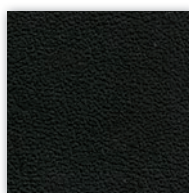
D 421



D 422



D 423



D 424

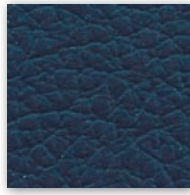
P

Categoria Category

Vera pelle - Genuine leather
Cuir - Leder - Piel autêntica
A richiesta disponibili altri colori.
By request any other colours available.



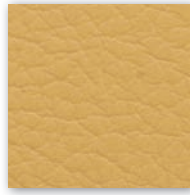
P 901



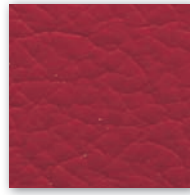
P 912



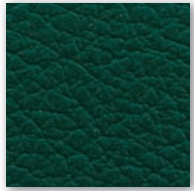
P 915



P 913



P 909



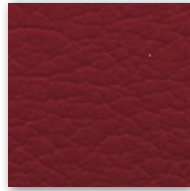
P 910



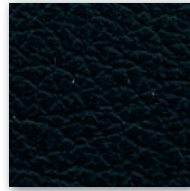
P 916



P 908



P 914



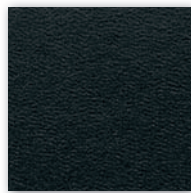
P 903

Cuoietto

Vera pelle - Genuine leather
Cuir - Leder - Piel autêntica
Solo modelli Kampus
Only Kampus models



BORDEAUX
BURGUNDY
BORDEAUX
BORDEAUX ROT
GRANATE

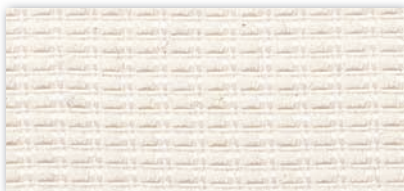


NERO
BLACK
NOIR
SCHWARZ
NEGRO

D

Categoria Category

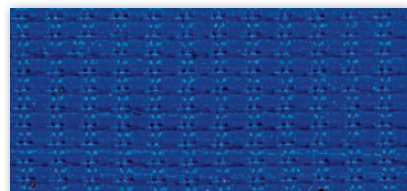
Rete - Mesh - Resille - Membran - Red
64% PL - 36% PA - Martindale 100,000



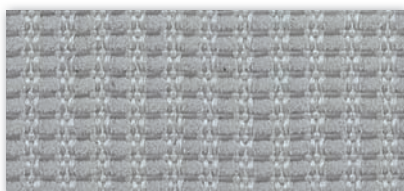
D 218



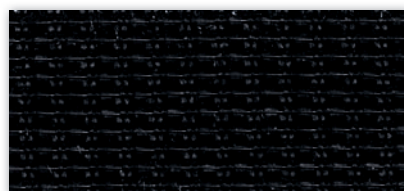
D 219



D 220



D 221

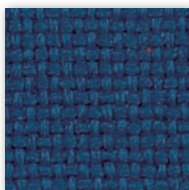


D 222

B

Categoria Category

Tessuto altamente ignifugo
Certificato Classe 1 Ministero dell'Interno
Fireproof fabric - Tissu non feu
Brandfester Bezug - Tela ignifuga
100% Olefinica
(Martindale 60.000)



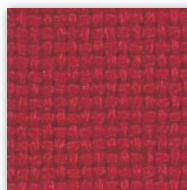
B 255



B 256



B 257



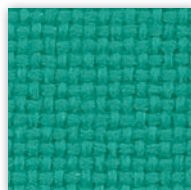
B 253



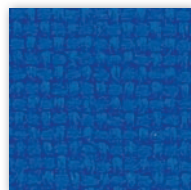
B 250



B 258



B 251



B 252

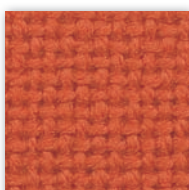


B 254

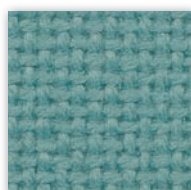
C

Categoria Category

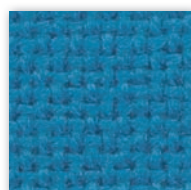
TREVI Tessuto altamente ignifugo
Certificato Classe 1 Ministero dell'Interno
Fireproof fabric - Tissu non feu
Brandfester Bezug - Tela ignifuga
100% Poliestere Trevira CS
(Martindale 120.000)



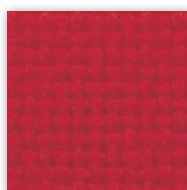
C 323



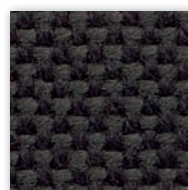
C 321



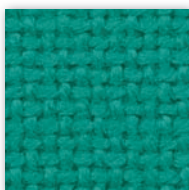
C 314



C 300



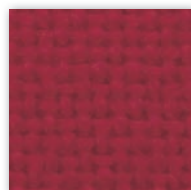
C 311



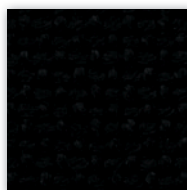
C 306



C 319



C 316

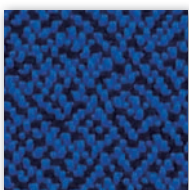


C 310

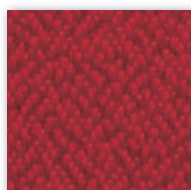
C

Categoria Category

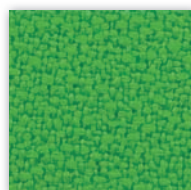
Tessuto altamente ignifugo
Certificato Classe 1 Ministero dell'Interno
Fireproof fabric - Tissu non feu
Brandfester Bezug - Tela ignifuga
100% Poliestere Trevira CS
(Martindale 100.000)



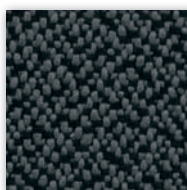
C 360



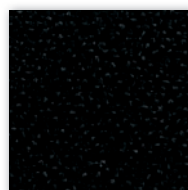
C 361



C 359



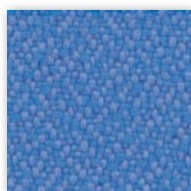
C 363



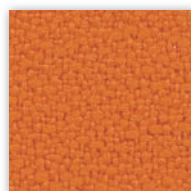
C 364



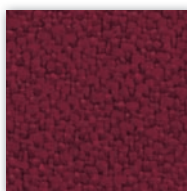
C 366



C 367



C 368



C 369

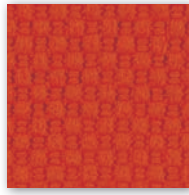


Categoria
Category

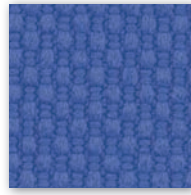
TREVI Tessuto altamente ignifugo
Certificato Classe 1 Ministero dell'Interno
Fireproof fabric - Tissu non feu
Brandfester Bezug - Tela ignifuga
100% Poliestere Trevira CS
(Martindale)



C 381



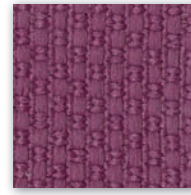
C 380



C 383



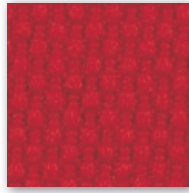
C 38 G



C 38 L



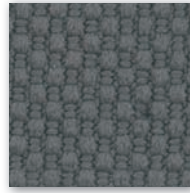
C 38 M



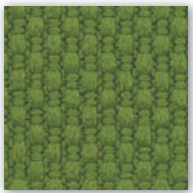
C 382



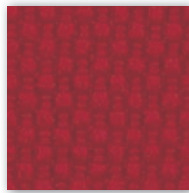
C 387



C 384



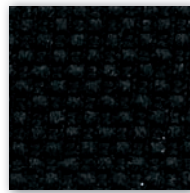
C 385



C 386



C 38

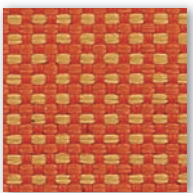


C 388

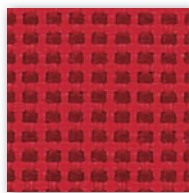


Categoria
Category

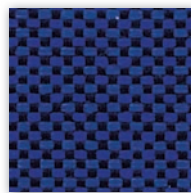
Tessuto altamente ignifugo
Certificato Classe 1 Ministero dell'Interno
Fireproof fabric - Tissu non feu
Brandfester Bezug - Tela ignifuga
100% Poliestere Trevira CS
(Martindale 55.000)



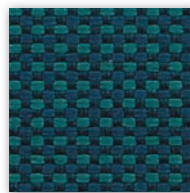
C 395



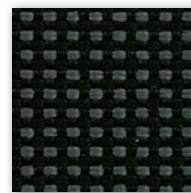
C 396



C 397



C 398



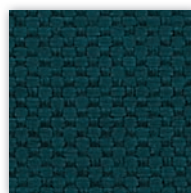
C 399



C 390



C 391



C 392



C 393

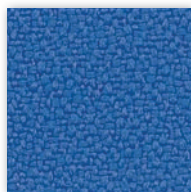
C

Categoria Category

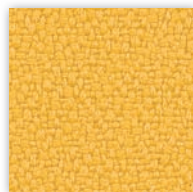
Tessuto altamente ignifugo
Certificato Classe 1 Ministero dell'Interno
Fireproof fabric - Tissu non feu
Brandfester Bezug - Tela ignifuga
100% Xtreme FR®
(Martindale 100.000)



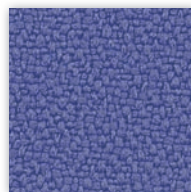
C 335



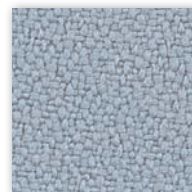
C 338



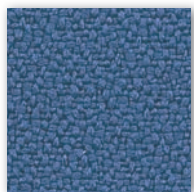
C 336



C 339



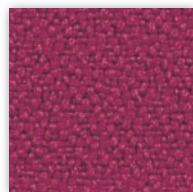
C 349



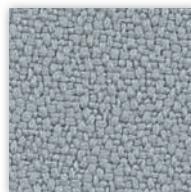
C 325



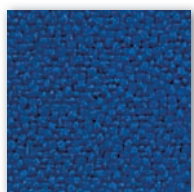
C 332



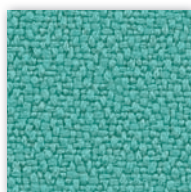
C 337



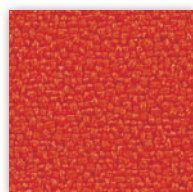
C 331



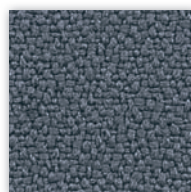
C 326



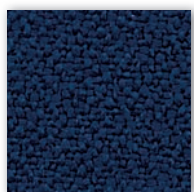
C 333



C 334



C 324



C 330



C 327



C 329



C 328

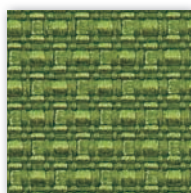
D

Categoria Category

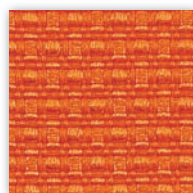
Tessuto altamente ignifugo
Certificato Classe 1 Ministero dell'Interno
Fireproof fabric - Tissu non feu
Brandfester Bezug - Tela ignifuga
100% Poliestere Trevira CS
(Martindale 110.000)



D 440



D 441



D 442



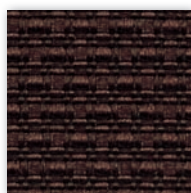
D 443



D 444



D 445



D 446



D 447



D 448